



Compiere 3.2 Installation Instructions Linux System - EnterpriseDB

Compiere Learning Services Division

Table of Contents

Compiere ERP & CRM Installation Instructions – Enterprise DB - Linux System

Compiere 3.2 - Installation Instructions – EnterpriseDB 3

Prerequisites	3
Database Installation	3

Compiere 3.2 New Installation Instructions 8

Java Installation	8
Edit the Path	8
Download Compiere	8
Complete Server Setup	15
Start Compiere	16

Compiere 3.2 - Installation Instructions – EnterpriseDB

Prerequisites

- Database approved Linux Operating System
- Disk Space: > 5 GB (includes database)
- Swap Space: > 1GB
- Recommended: Hardware RAID 10
- Memory: > 512 MB - Recommended: > 1 GB
- TCP/IP connection
- Network set up with DNS server and a domain

Database Installation

1. Install Database



2. Install Java



3. Download Compiere

unzip / tar



4. Setup Compiere

RUN_setup



5. Complete Server Setup

RUN_Server2



1. Install Database – this document will use Postgres Plus Advanced Server 8.3.
 - 1) First, Log on with root permissions.
 - 2) Get the Postgres Plus Advanced Server 8.3 for Linux x86 installer from the following EnterpriseDB website:
<http://www.enterprisedb.com/products/download.do>
 - 3) Download the file appropriate for your OS and uncompress the tar file. (i.e., tar -xzf pgplus-advsvr-linux-x86_83012.tar.gz)
 - 4) Run the installer (e.g. pgplus-advsvr-linux-x86_83012.bin).

5) The welcome page displays.

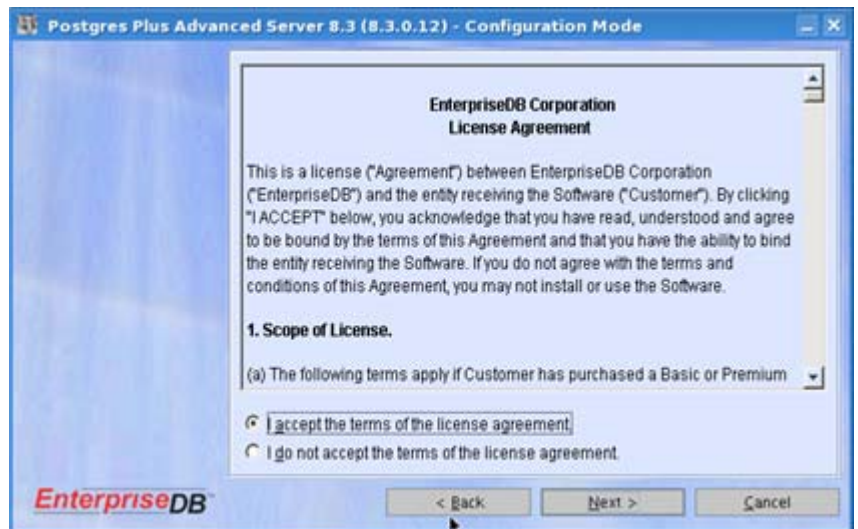
Hint: you may be using a later version.

6) Select the Next button to continue with the Installation.



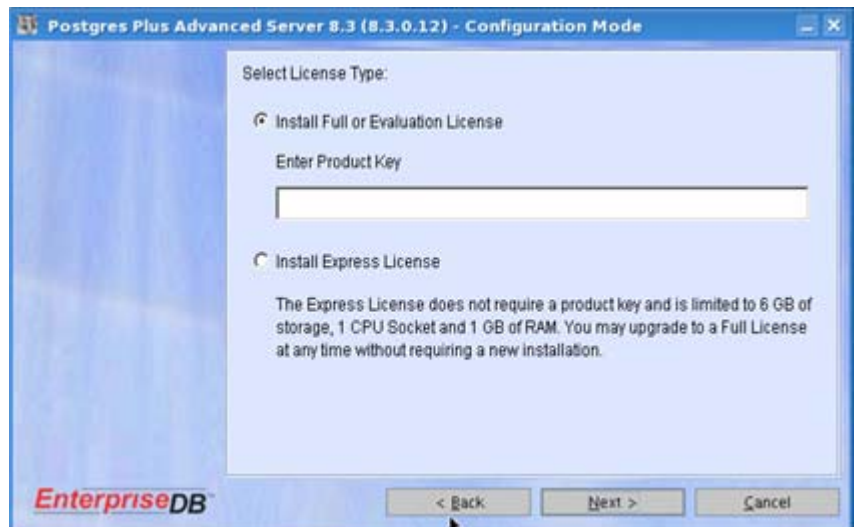
7) Review and accept the License agreement.

8) Then select the Next button to continue.

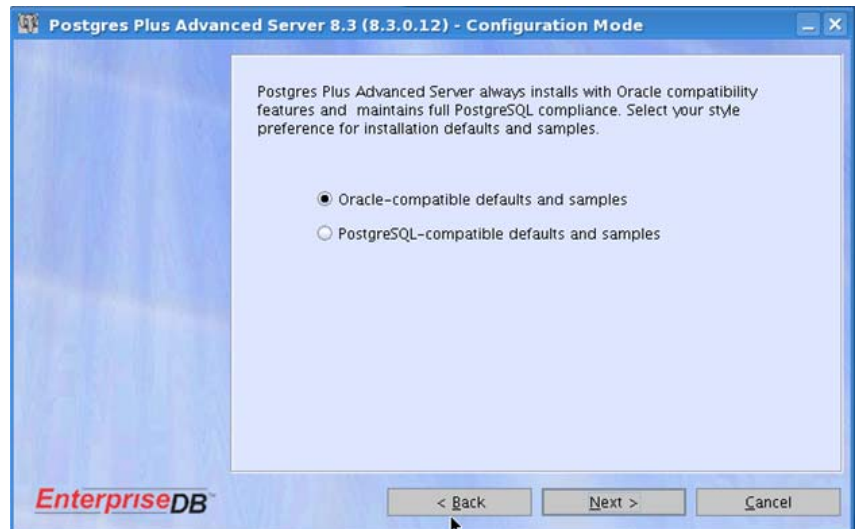


9) Select the appropriate license type.

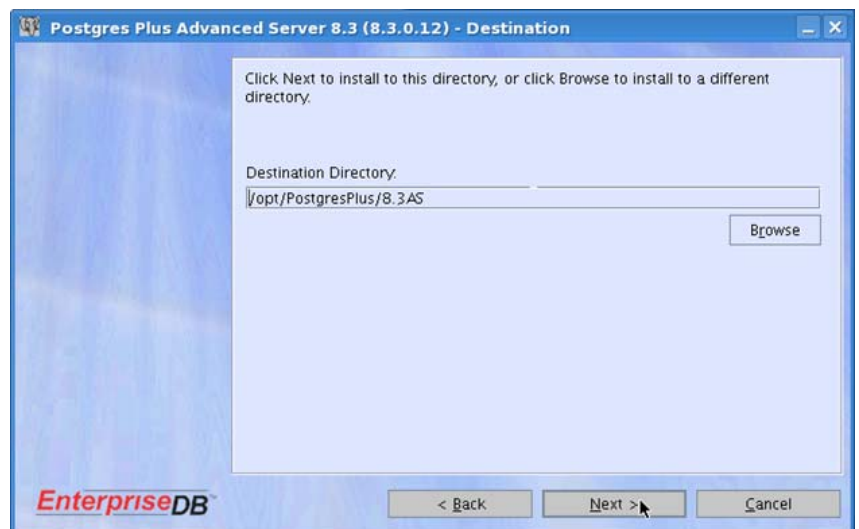
10) Select the Next button to continue.



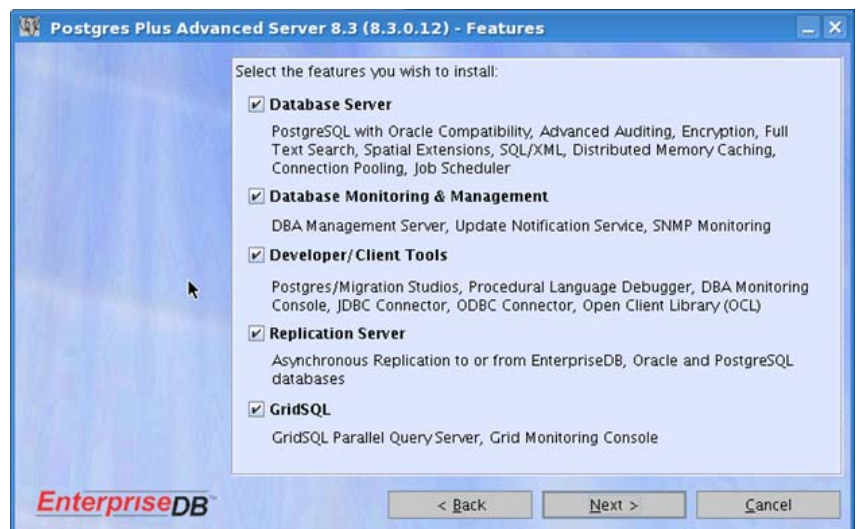
- 11) Select the Oracle Compatible Configuration.
- 12) Select the Next button to continue.



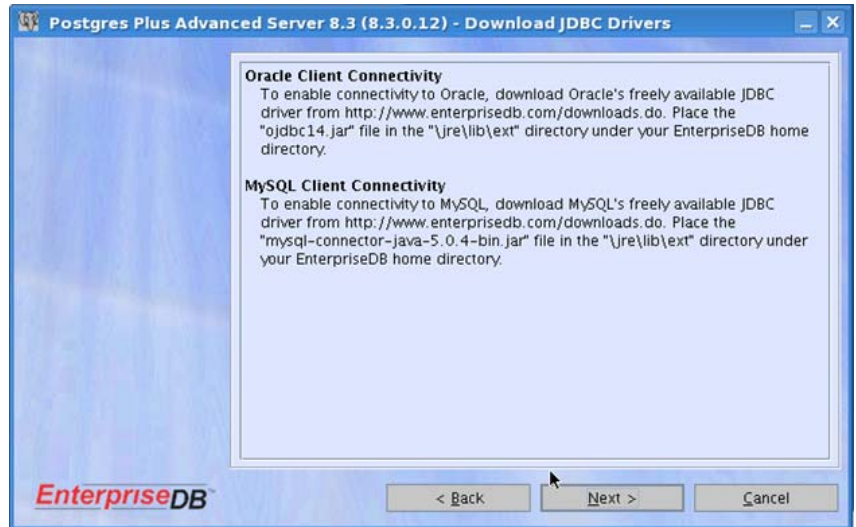
- 13) Select the destination folder by selecting the Browse button.
Hint: This document will assume that root is the selected directory.
- 14) Select the Next button to continue.



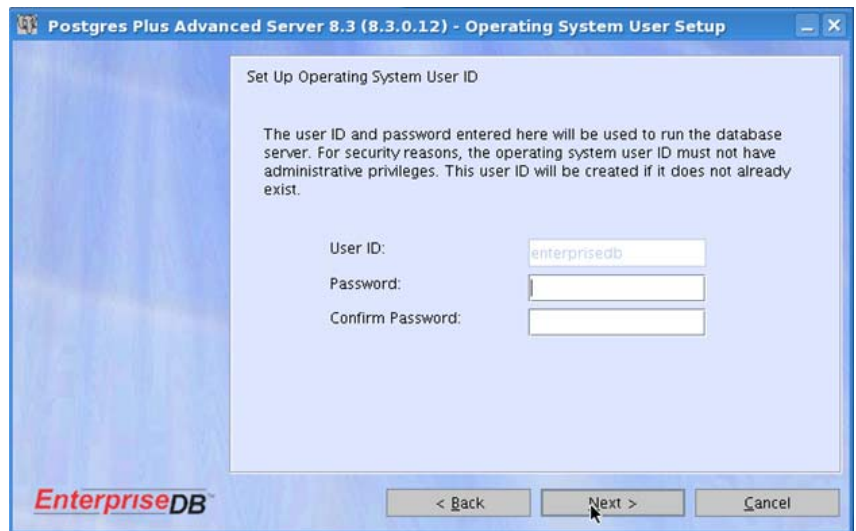
- 15) Accept the default selections for EnterpriseDB features and select the Next button to continue.



- 16) Review the Instructions for Oracle Client Connectivity.
- 17) Select the Next button to continue.



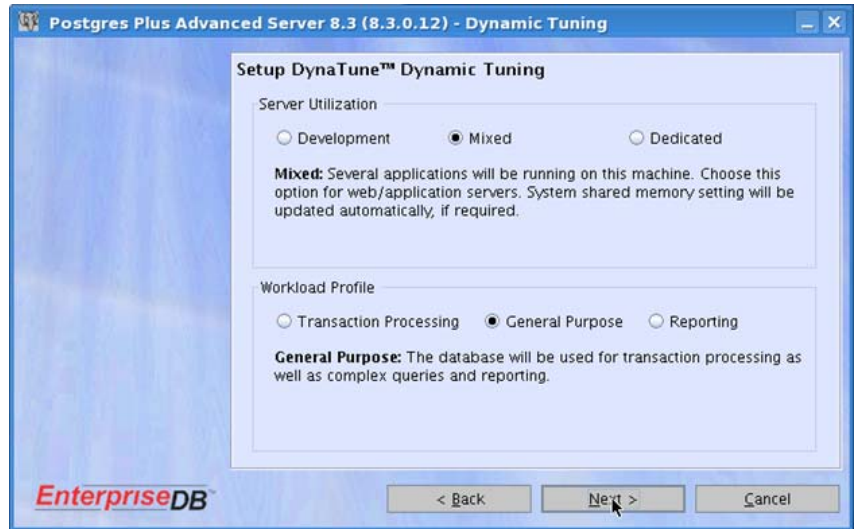
- 18) Enter and confirm a User ID and Password for the System Administrator.
- 19) Then select the Next button to continue.



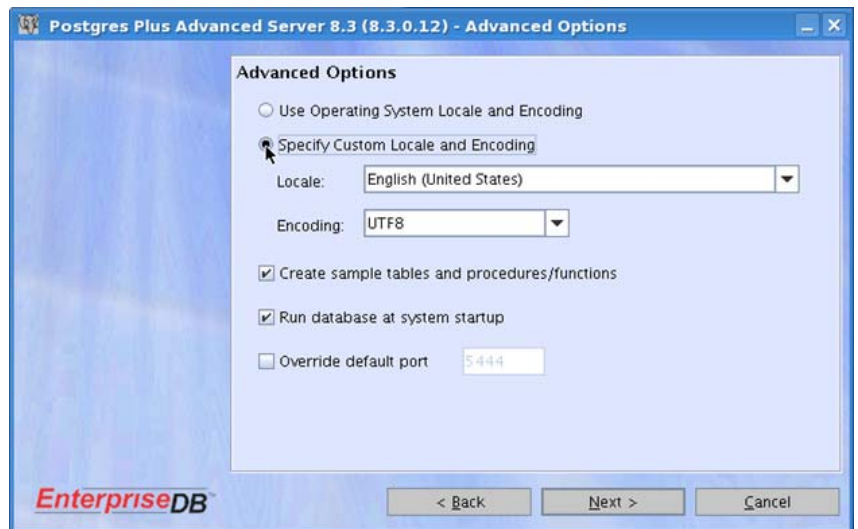
- 20) Enter and confirm a Password for the Database Administrator.
- 21) Validate the location of the data destination and WAL directories.
- 22) Then select the Next button to continue.



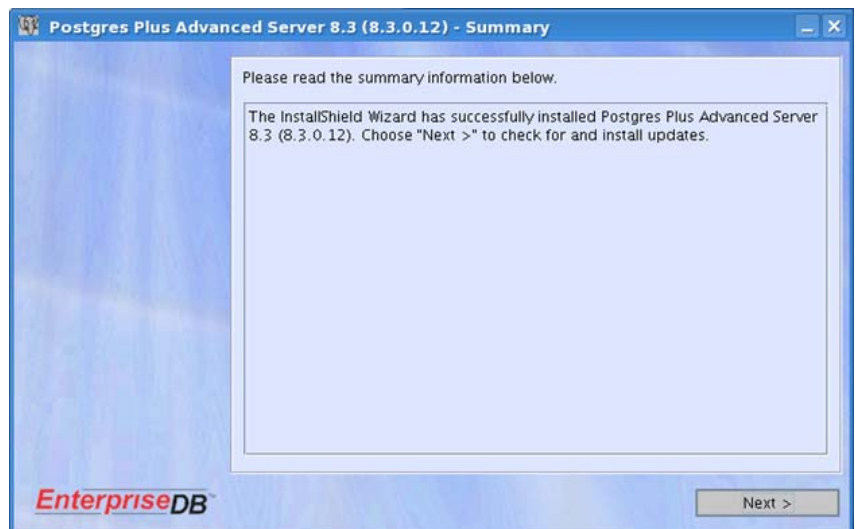
- 23) Select the appropriate option depending on the resources available on the database server.
- 24) Select the Next button to continue.



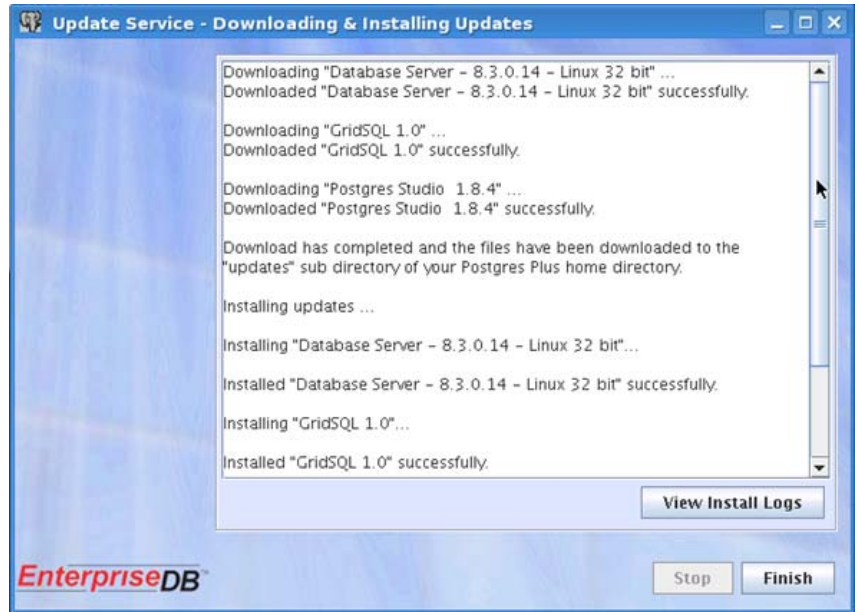
- 25) For the Advanced Options, accept the default options if applicable.
- 26) Then select the Next button to continue.



- 27) Review the Installation Settings. Select the Back button to make changes if necessary.
- 28) If the Installation settings are correct, select the Install button to start the Installation.



- 29) When the Installation is complete, the following confirmation window will display:
- 30) Click "Finish" to complete the Installation.



- 31) Once the Developer Studio opens, enter the Database Administrator User ID and Password used in step 19.
Hint: This confirms the Database Installation.

Compiere 3.2 New Installation Instructions

Java Installation

1. Download and install [Sun Java JDK 6](#) (SDK), update 5 or higher
Important: The Compiere Server requires the JDK (not just JRE).

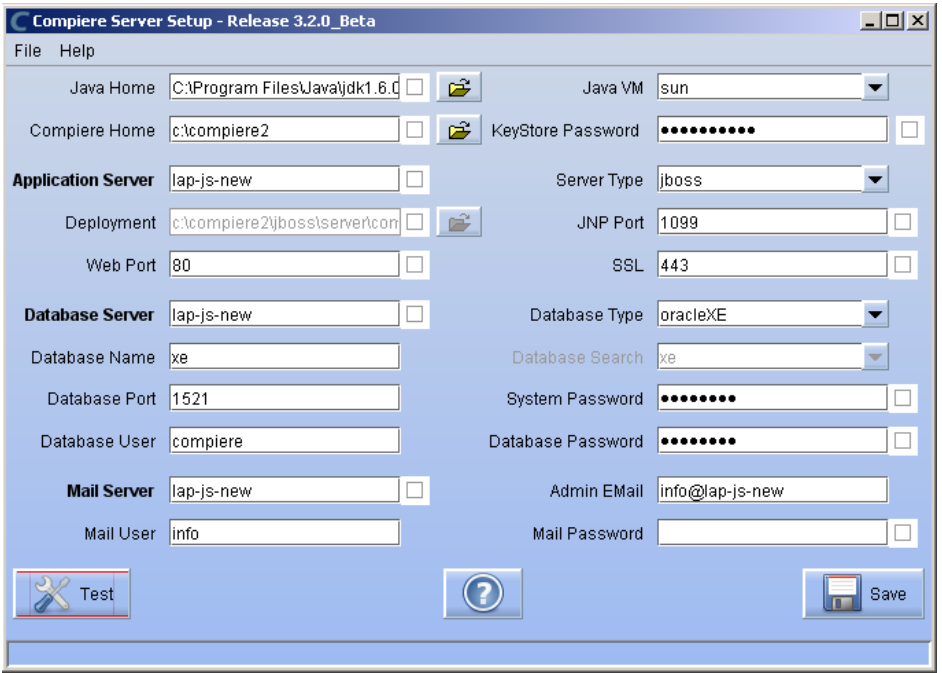
Edit the Path

2. Add EnterpriseDB into the environment variable PATH
(e.g. /opt/EnterpriseDB/8.3/dbserver/bin to /opt/PostgresPlus/8.3AS/dbserver/bin)

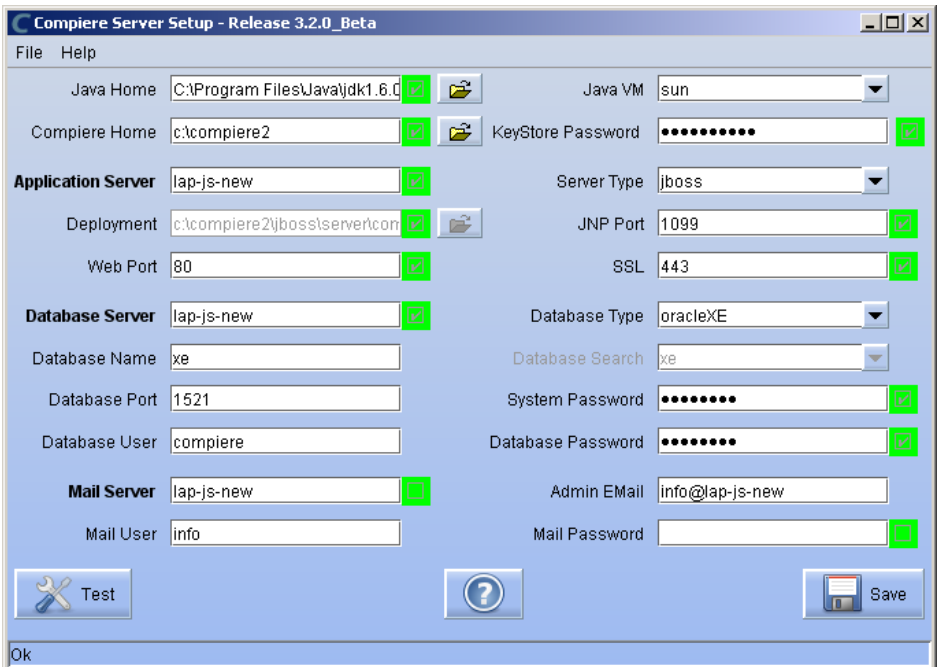
Download Compiere

3. Install /Setup Compiere Server (this includes the Client as well)
 - 1) Download the current version of Compiere: [Download Compiere](#). (3.2 or higher)
 - 2) Extract the .zip file. The steps shown assume that you extract to the root directory, resulting in a COMPIERE_HOME of /Compiere2 in Linux.
 - 3) Verify that the bin directory for your database executables is included in the PATH.
 - 4) Execute the script \$COMPIERE_HOME/RUN_Setup.
Note: if the following window does not display, please ensure that the following are updated.
 - Add the folder where you have installed JDK 1.6 at the beginning of the **PATH** system environment variable.
 - Set the **JAVA_HOME** system variable to the location of your java installation (e.g., PATH=\$PATH: /Java/jdk1.6.0_5')
 - Set the **COMPIERE_HOME** system variable to the path of your Compiere installation (e.g., PATH=\$PATH: /Compiere2')

- 5) Select Database Type of postgresSQL.
- 6) For System Password use the Database System user password, (part 1, step 19).
- 7) For Database Password, use 'compiere' (or any password.)
- 8) For Server Names, i.e., (Application, Database and Mail) use the DNS name of the server. **Hint:** Do not use localhost (127.0.0.1) or IP address.
- 9) Enter or update any other Parameters as necessary.



- 10) Select the Help button, for information on any field.
- 11) Select the Test button to check the parameters. **Tip:** Parameters must be verified in order to save.
- 12) If an entry is unverifiable, it will display with a red X. Correct the entry and re-select Test/Save.
- 13) Once all fields are verified, click the Save button to proceed.

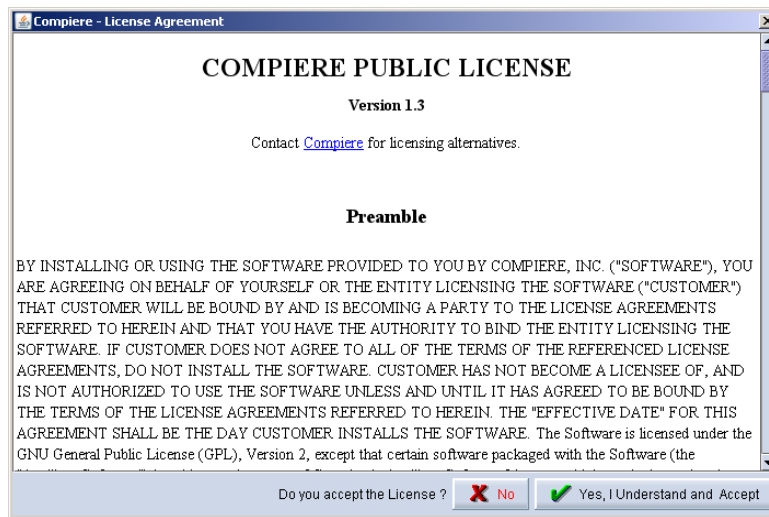


- 14) At the prompt enter your company information as appropriate and verify that the common name is the address of your application server. Once all fields are complete, click ok to continue.

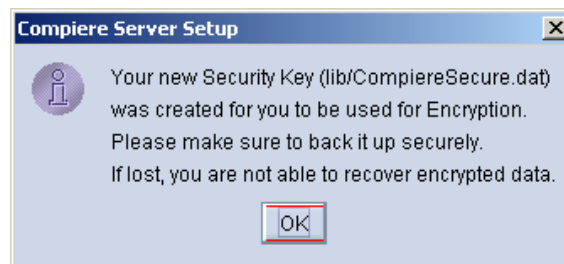


15) Next, read and accept the license agreement.

Hint: You might get more than one license agreement, depending on the components that you are installing.



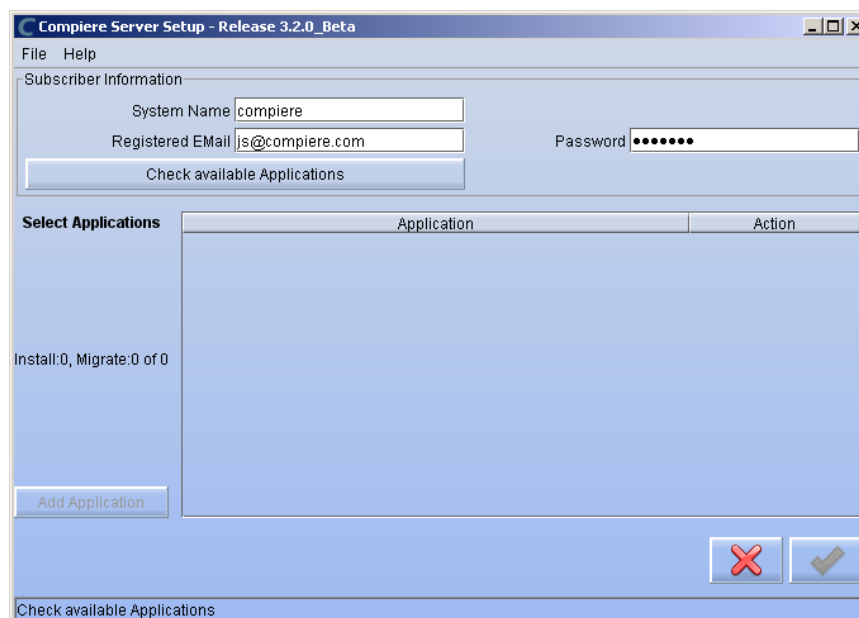
16) A default security key will be generated, click 'Ok' to continue.



17) The Next step is to provide the Subscriber Information. Current customers should provide the subscriber information (**System Name, Email and Password**) exactly as it was registered in the Compiere Web Store to get a complete list of applications.

Click Check Available Applications to get a list of applications that are available to be installed.

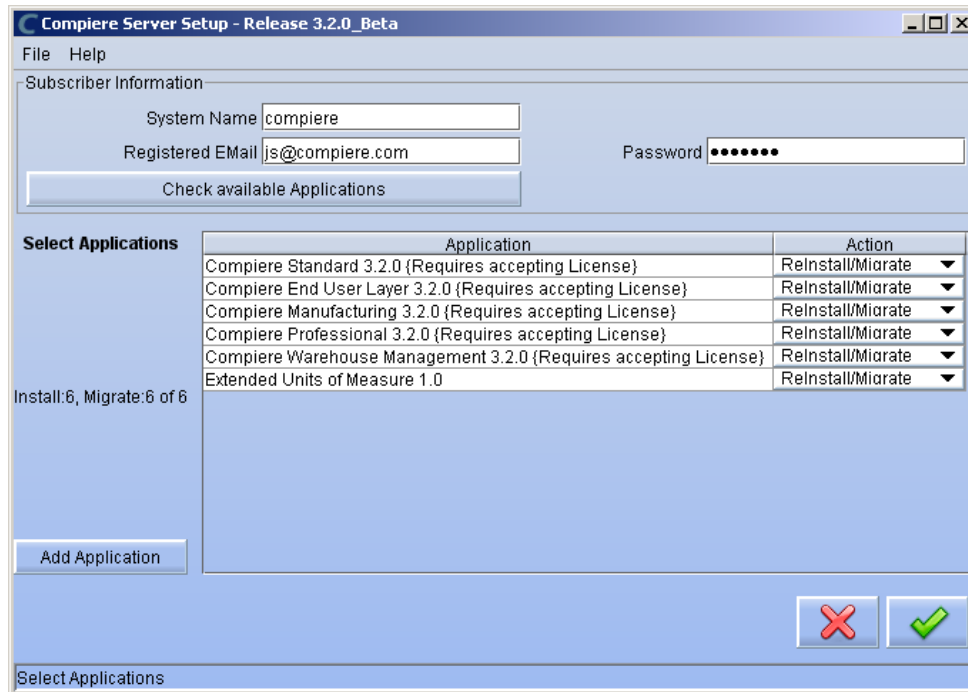
Tip: Community Edition users may leave the fields blank and click "Check available components" to install the Community Edition.



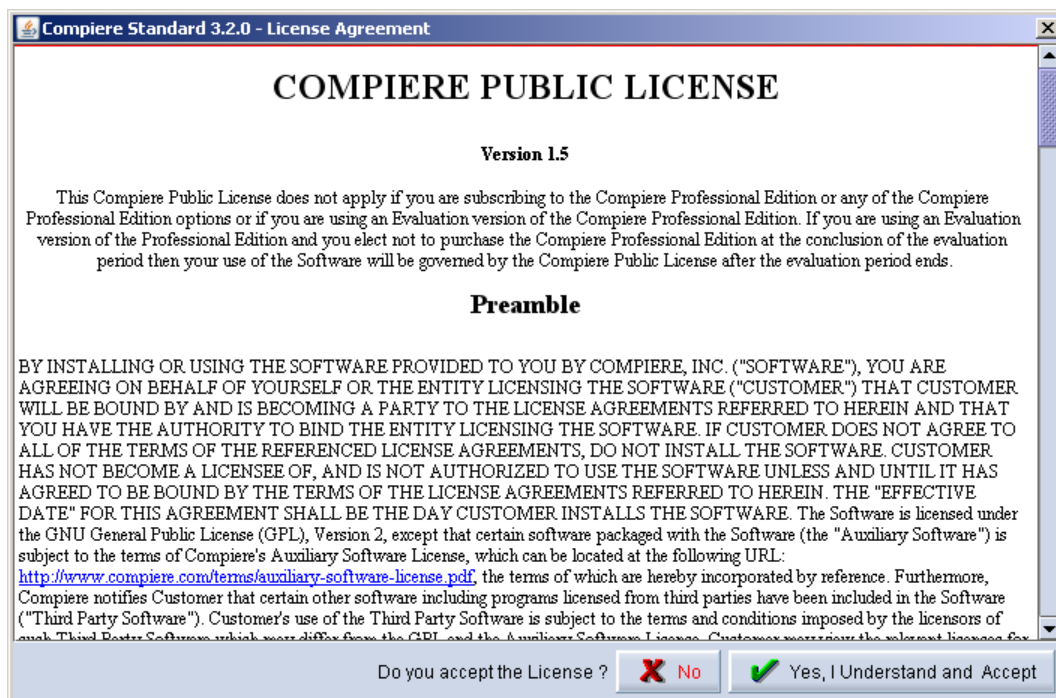
- 18) Select the applications that you would like to install. You can include additional applications by using the button Add Application.

By default all available applications will be installed. If you do not wish to install one of them you should change the action field from "New Install" to "-None-". Notice that Compiere Core is a *Mandatory Prerequisite* and must be selected.

Select the OK button to continue

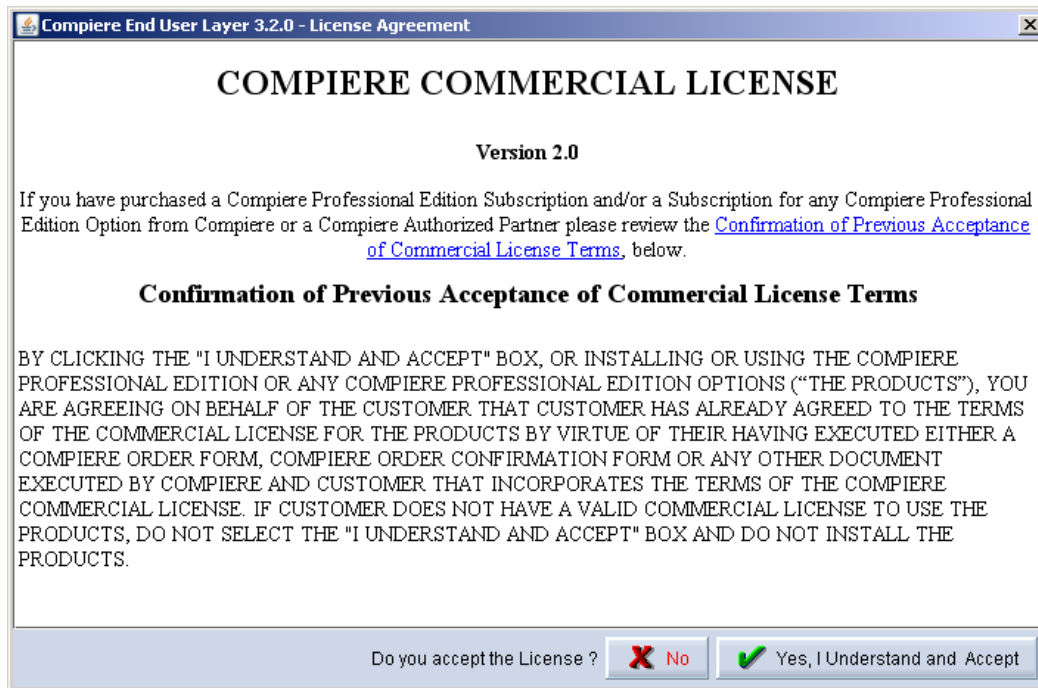


- 19) Next, read and accept the Compiere Public License agreement.
Hint: You might get more than one license agreement, depending on the applications that you are installing.

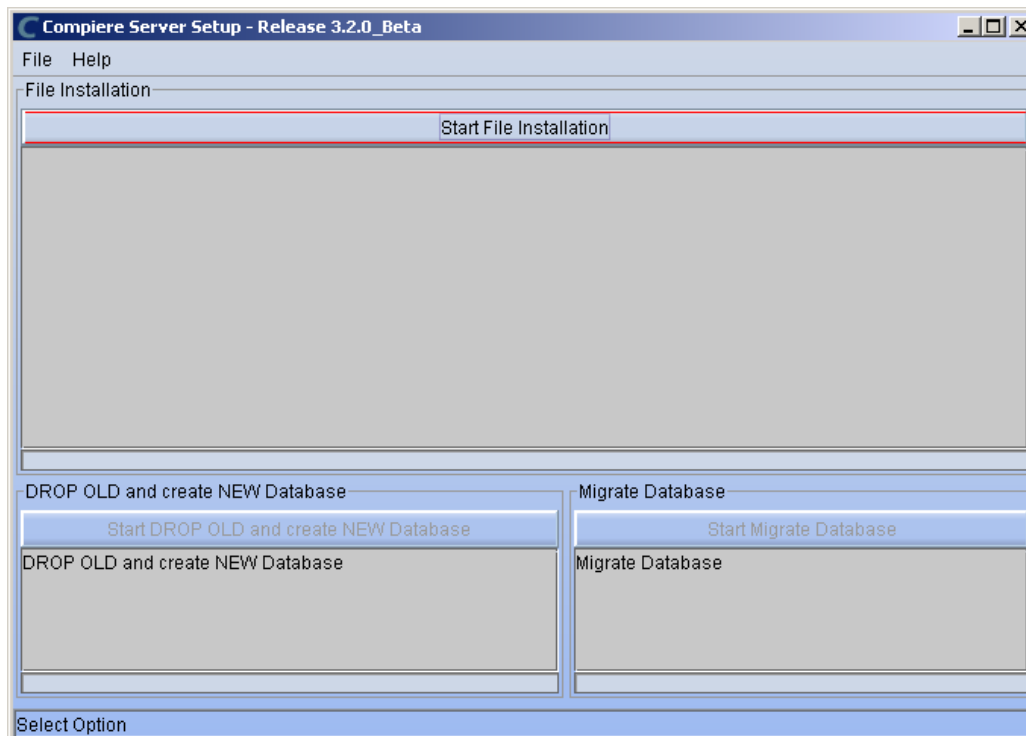


20) Then read and accept the Compiere Commercial License agreement.

Hint: You might get more than one license agreement, depending on the applications that you are installing.



21) After accepting the license agreement the following window will display:

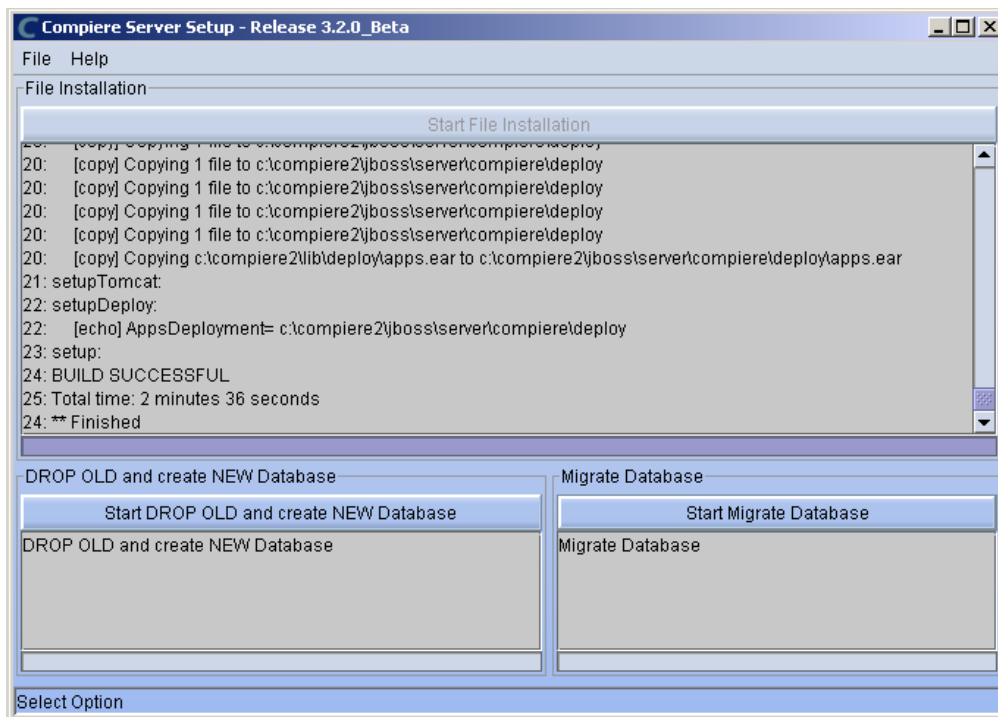


22) Select Start File Installation.

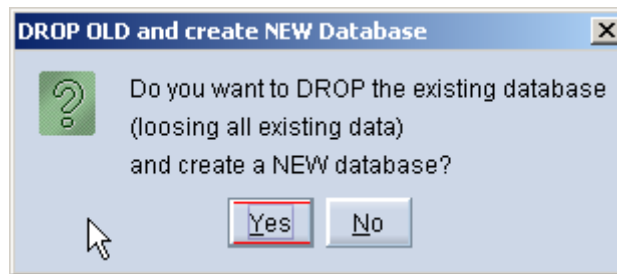
Important: At this point, you must be connected to the internet to continue or the installation will not succeed.

23) Once the file installation is complete, select Start Create New Database.

Note: If you already have a Compiere database in your system, you will be presented with a split panel after 'Start Server Install'. Click the left panel (Start DROP OLD and create NEW Database) if you want to replace the existing database with the new database.

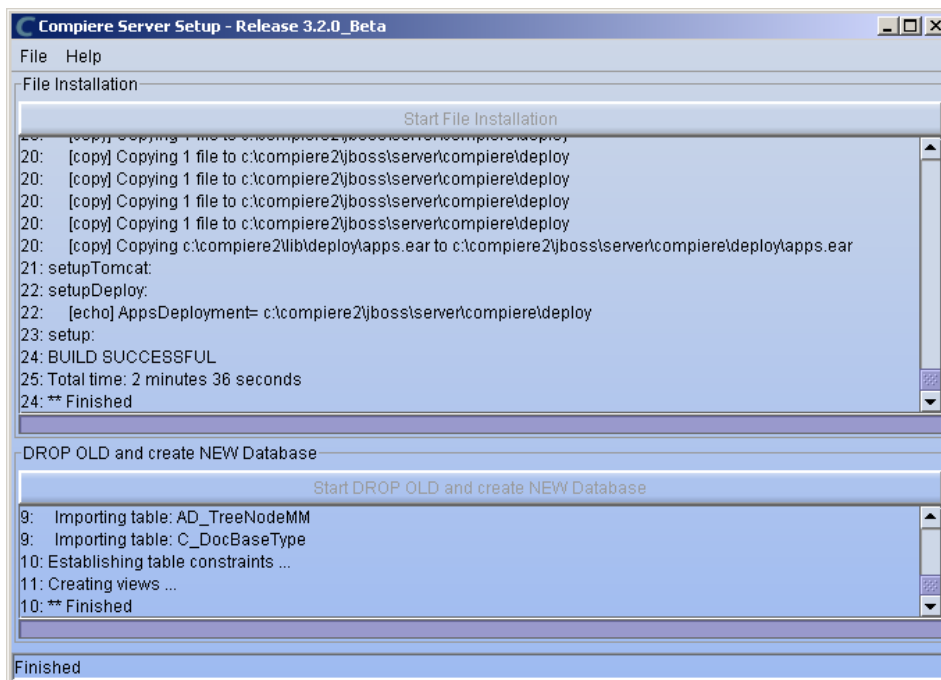


24) At the prompt select 'Yes' to Drop the existing Database and create a new database.



Warning: If you choose to replace the existing database, all data in the existing database will be removed.

25) Verify that you see a '10: ** Finished' message at the end of this step. Then a new window should pop-up to do the license validation.

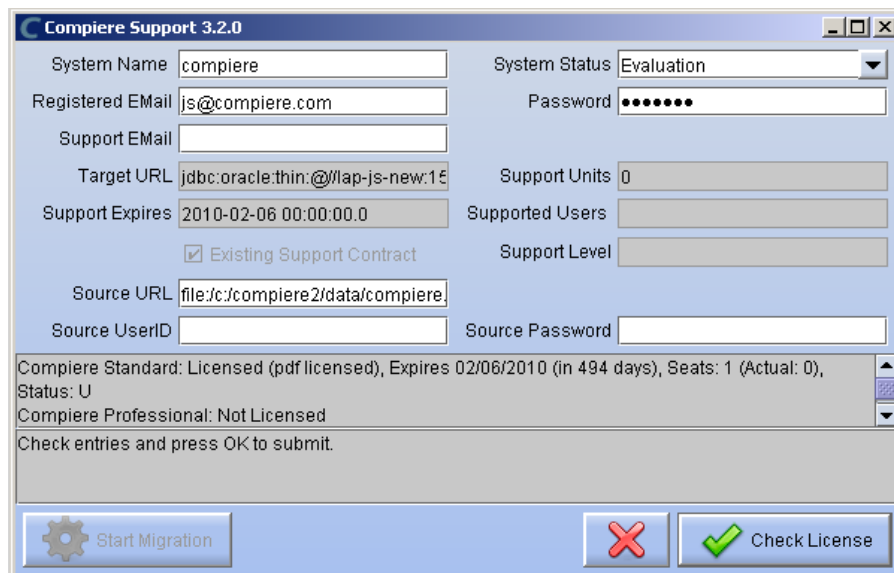


Tip: If you only intend to use the Community Edition of Compiere 3.2, you may skip the following steps and go to the Application Server section.

Important: For customers with a valid support contract with Compiere, this is a required step to ensure that the features associated with the support level are enabled. If you are a customer and do not have a web store login, please contact your system administrator or Compiere Support first. If you are not a customer and would like to obtain a trial license for the Professional Edition, please [Contact Us](#) and request the files for the Professional Edition.

26) Provide the following information exactly as it was registered in the Compiere Web store and click Check License to validate your asset information.

- System Name (name provided in the web store registration)
- Registered Email (email address provided in the web store registration)
- Password (web store password)

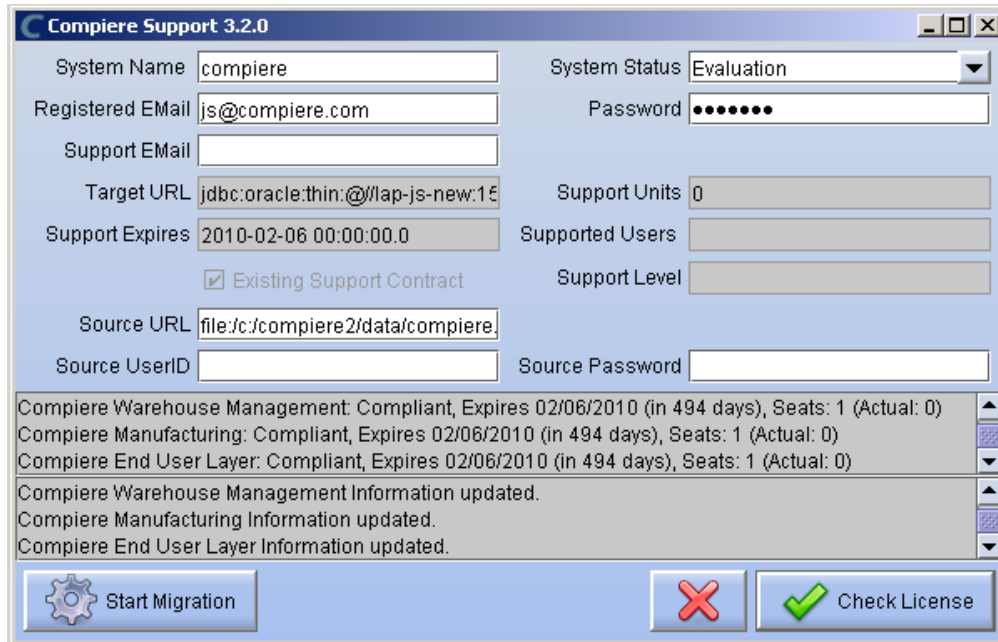


27) To verify your license, click the “Check License” button.

Tip: Do not click Start Migration.

Notice that internet access is required to validate the license information.

28) To verify your license, click the “Check License” button.



29) After Compiere Professional license has been verified, click the “X” to close the window.

Note: If you get the error “You do not have an appropriate license to use this feature” when starting the web UI, then login to the server and execute `utils/RUN_Support` to validate again your license and restart the application server.

30) Close any additional Setup and /or Support windows.

Complete Server Setup

4. Start the Compiere Application Server

- 1) You can now start the JBoss based Compiere Application Server via **RUN_Server2** in the `$COMPIERE_HOME/utils` directory.
- 2) There should be no errors. Check the logs in `$COMPIERE_HOME/jboss/server/compiere/logs` to verify this.
- 3) Common problems include ports already in use
 - 17:41:09,085 ERROR [NamingService] Could not start on port 1099
java.net.BindException: Address already in use: JVM_Bind
at java.net.PlainSocketImpl.socketBind(Native Method)
 - There is another program using port 1099; Stop it and restart Run_Server2 or setup Compiere to use another port in RUN_setup.

Likely port conflicts:

- 80 - You have some other web server running (or you need privileges under Linux/Unix)
- 8080 - The Oracle Database uses that
- 1099 - Often used by IDEs for debugging

Start Compiere

5. Start the Compiere Client

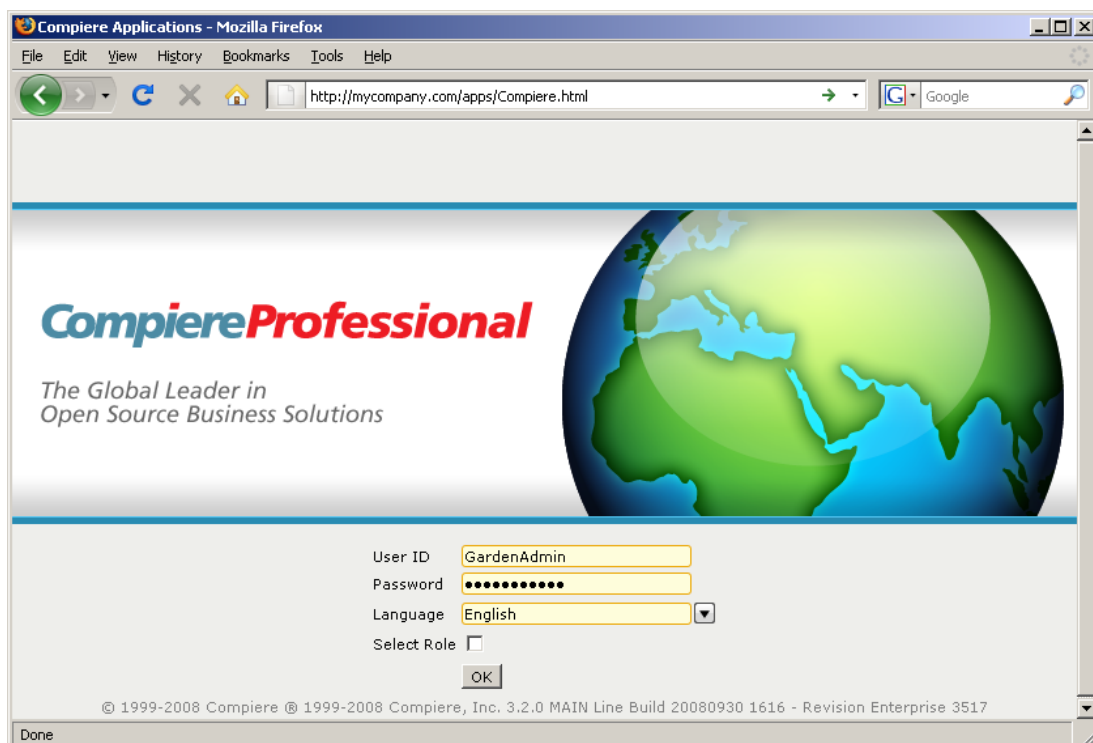
- 1) Start the Swing client by double clicking on the Compiere shortcut in your desktop or by executing **RUN_Compiere2** from the \$COMPIERE_HOME directory.

Default users and passwords for the sample Garden World application.

- GardenUser/GardenUser
- System/System
- GardenAdmin/GardenAdmin
- SuperUser/System



Alternatively, if you have access to the Professional Edition, you can launch the application from the browser by using the URL: <http://server:port/apps> (e.g. <http://mycompany.com:80/apps>)



Information: For additional information see the Compiere home page <http://www.compiere.com>.